

1533-35 West Fry Street

- **Current:**
 - **Two lots with two buildings with six units combined**
 - 1533 West Fry Street
 - Two 2 bedroom units
 - Two parking spaces
 - 1535 West Fry Street
 - Four 1 bedroom units
 - Two parking spaces
- **Proposed**
 - **One building with six condominium units**
 - Two 4 bedroom duplex-down units,
 - Two 3 bedroom simplex units, and
 - Two 3 bedroom duplex-up units
 - 6 car garage
 - These larger, family style units are meant to accommodate the growing number of young families putting down roots in the West Town/Ukrainian Village area.



Google



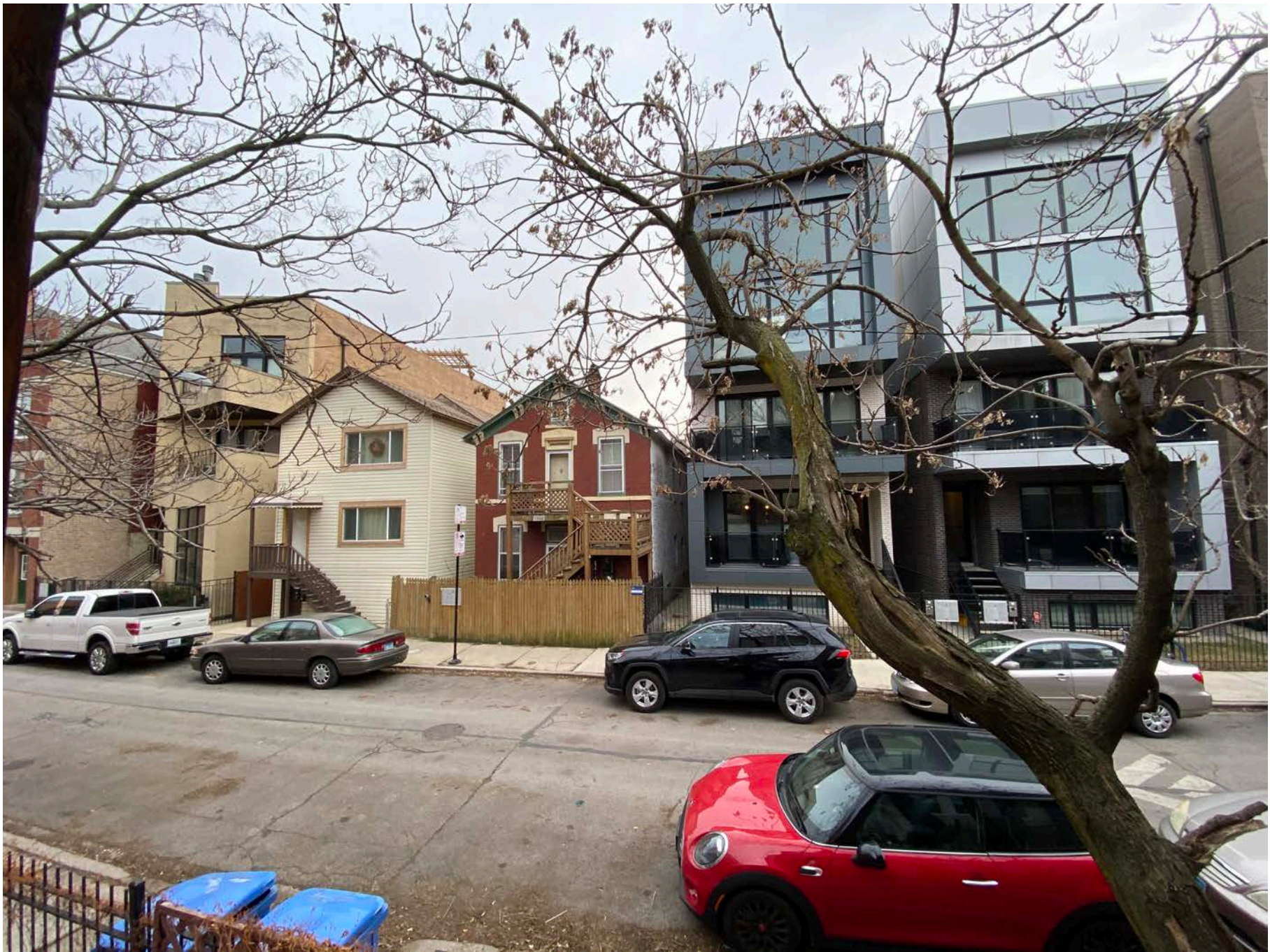
Screen
The
One
One





1533 West Fry Street

1535 West Fry Street





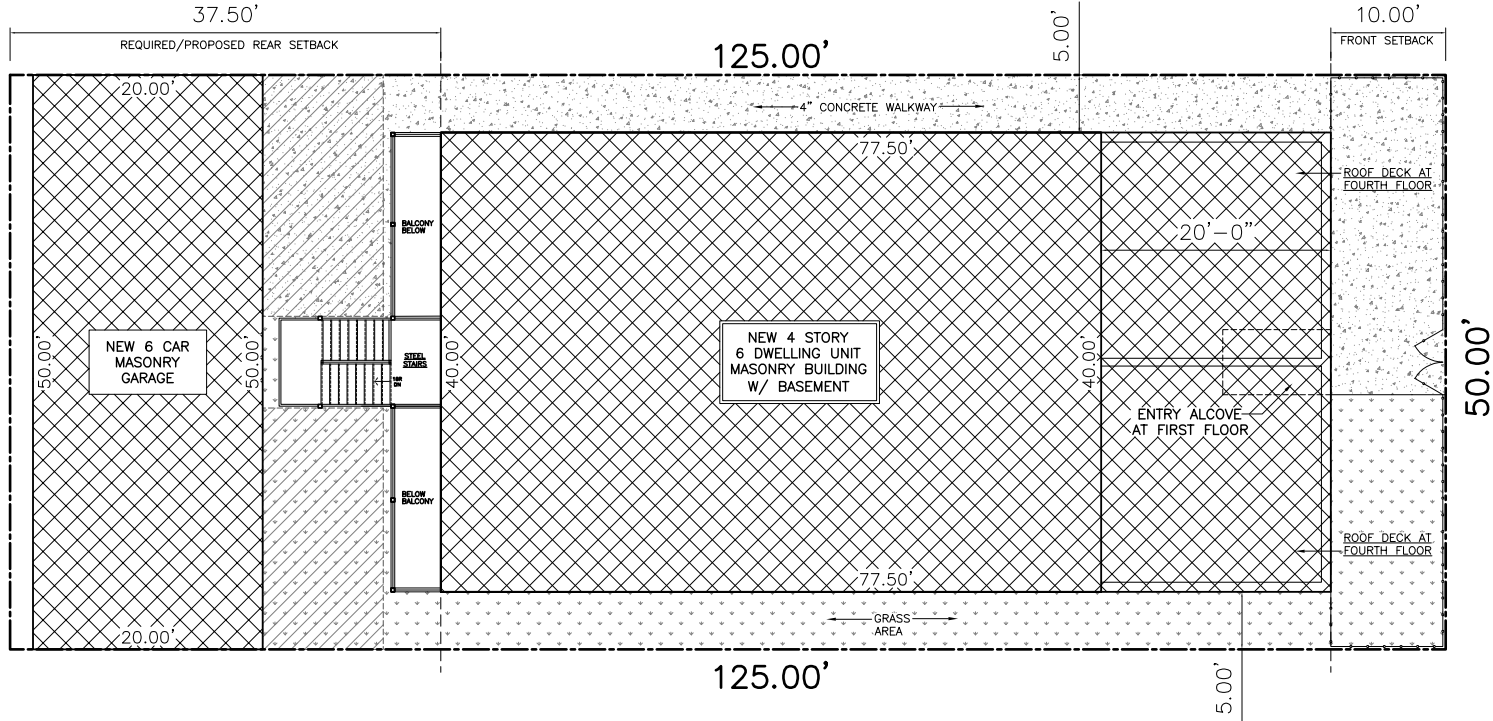
Looking West on West Fry Street



Looking East on West Fry Street

16' PUBLIC ASPHALT ALLEY

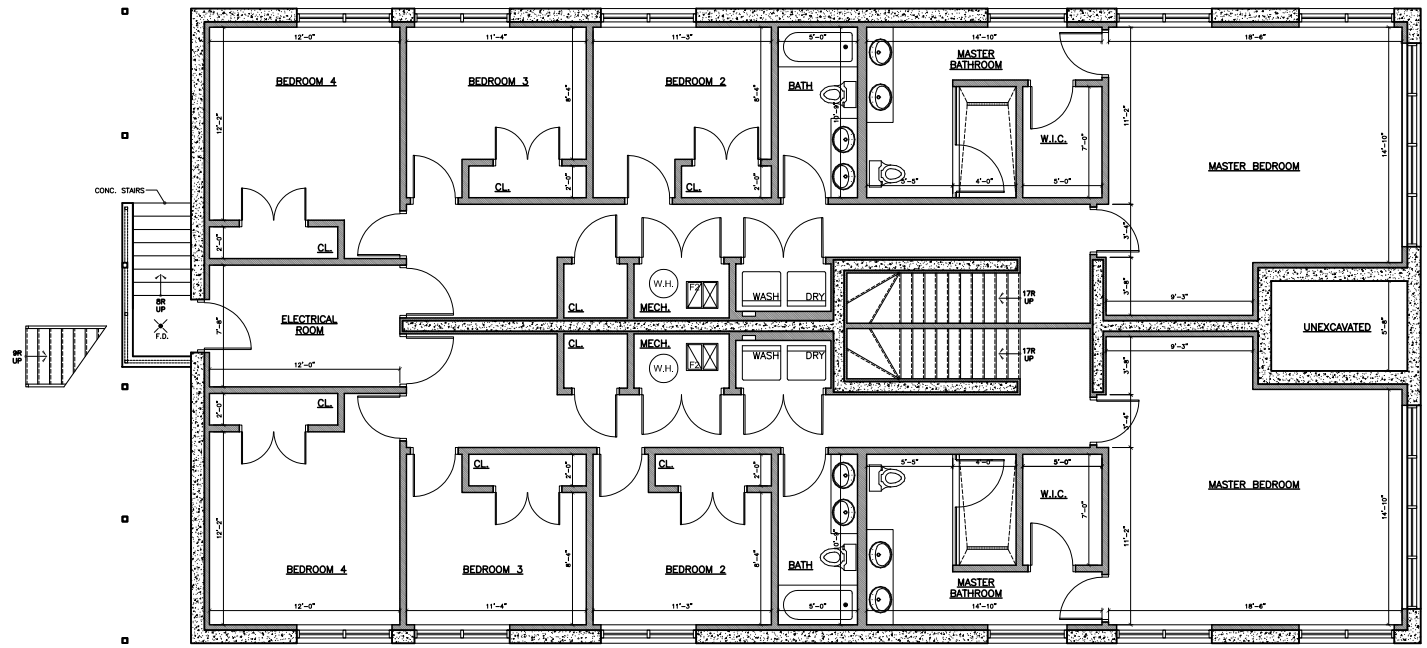
50.00'



↓
 ↓
 ↓
 — W. FRY ST. —

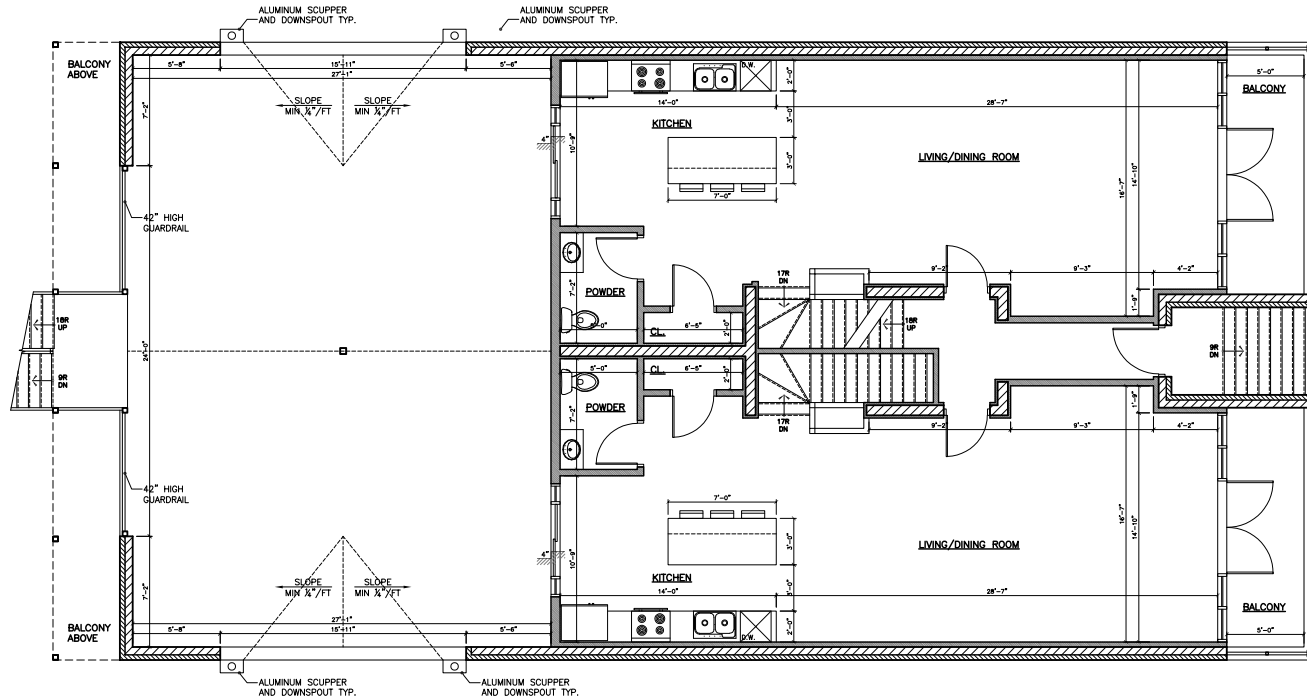
Site Plan

REVISIONS:	
DRAWN BY: RV	
SITE PLAN AND ZONING DATA	
1533-35 W. FRY ST. CHICAGO, IL 60642	
2123 N. Dearborn Ave. Chicago, IL 60627 ARCHITECTS RECTS ARCHITECTURAL ENGINEERING 773.772.2654 773.772.2654 fax	
PROJECT: 1533-35 FRY ST.	PLANNING
SCALE: NOT TO SCALE	DATE: 01-15-2020
SHEET: T1.0	
1 OF 10	



Proposed Basement Plan

REVISIONS:	
DRAWN BY:	RV
PROPOSED BASEMENT PLAN	
1533-35 W. FRY ST. CHICAGO, IL 60642	
PROJECT:	2123 N. Damen Ave. Chicago, IL 60647
ARCHITECTURE	773.772.2756 office 773.772.2854 fax
ARCHITECTS RECTS	
PLANNING	
ARCHITECTURAL ENGINEERING	
PROJECT:	1533-35 W. FRY ST.
SCALE:	AS SHOWN
DATE:	11/11/11
SHEET:	A1.0
2 OF 10	



Proposed First Floor Plan

REVISIONS
DRAWN BY:
RV

PROPOSED
FIRST FLOOR PLAN

1533-35 W. FRY ST.
CHICAGO, IL 60642

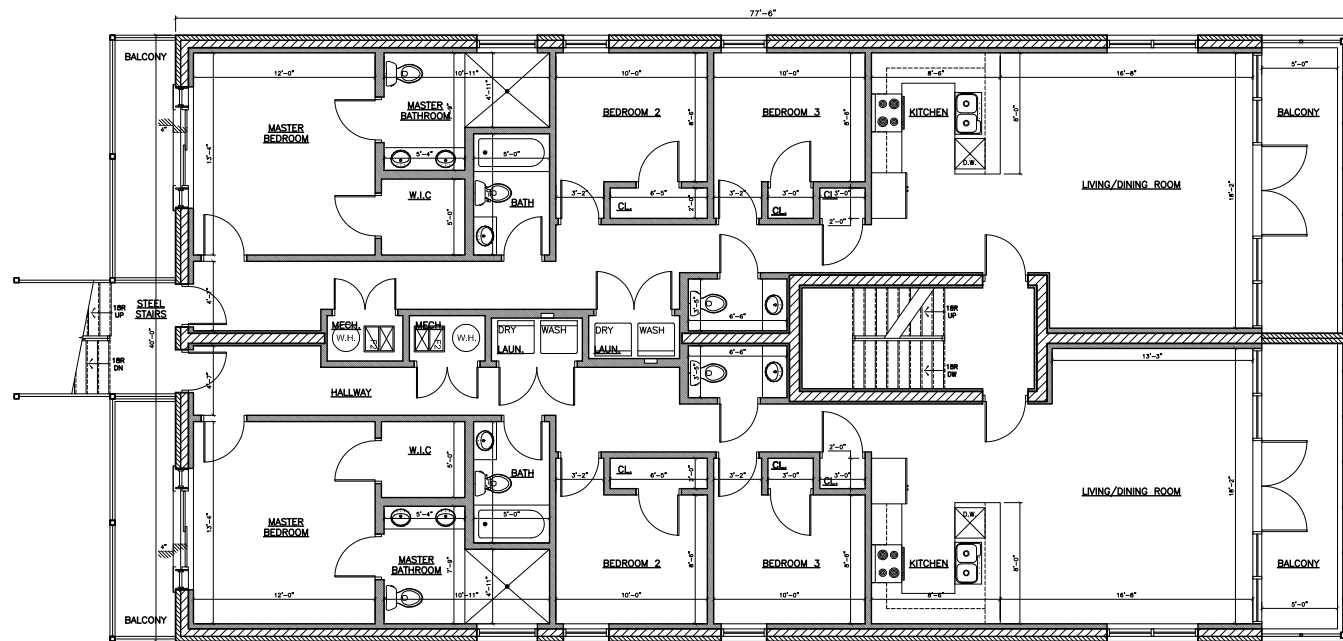
2120 N. Damen Ave.
Chicago, IL 60647
773.772.0766
773.772.2854 fax

ARCHITECTURE
PLANNING
ARCHITECTURAL ENGINEERING

RECTS
ARCHITECT
D

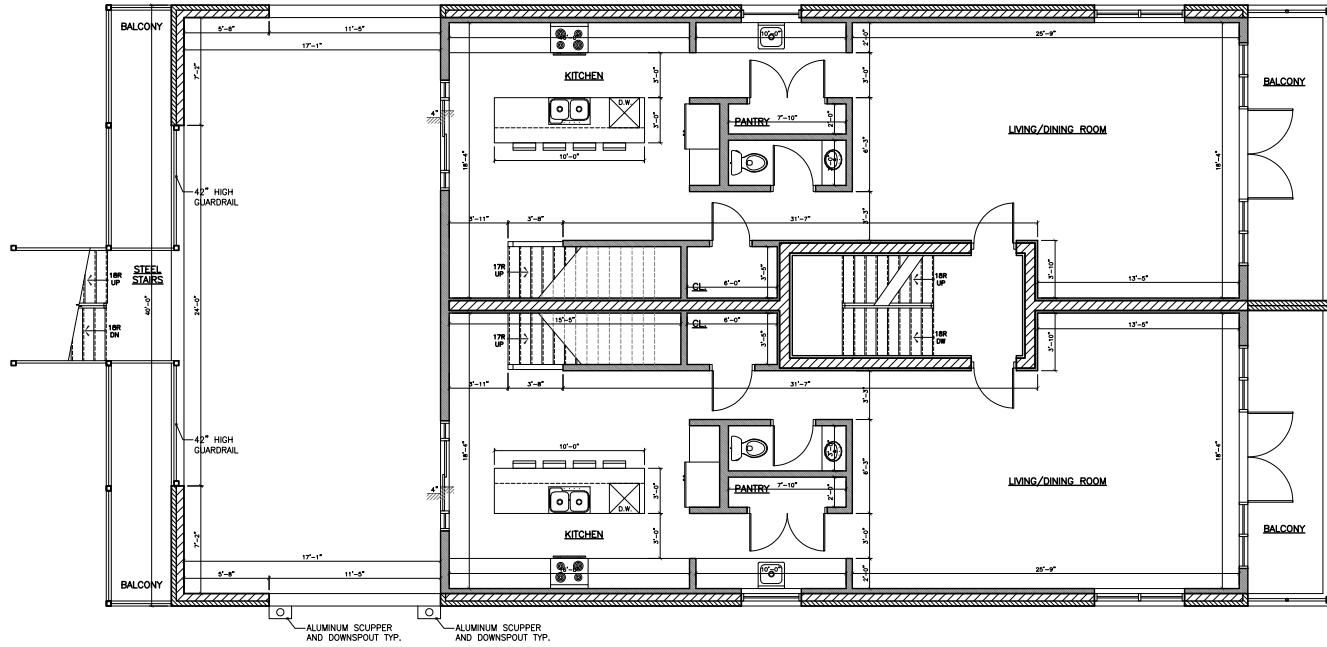
PROJECT:
1533-35 W. FRY ST.
SCALE:
NOT TO SCALE
DATE:
9-13-2020

SHEET:
A1.1



Proposed Second Floor Plan

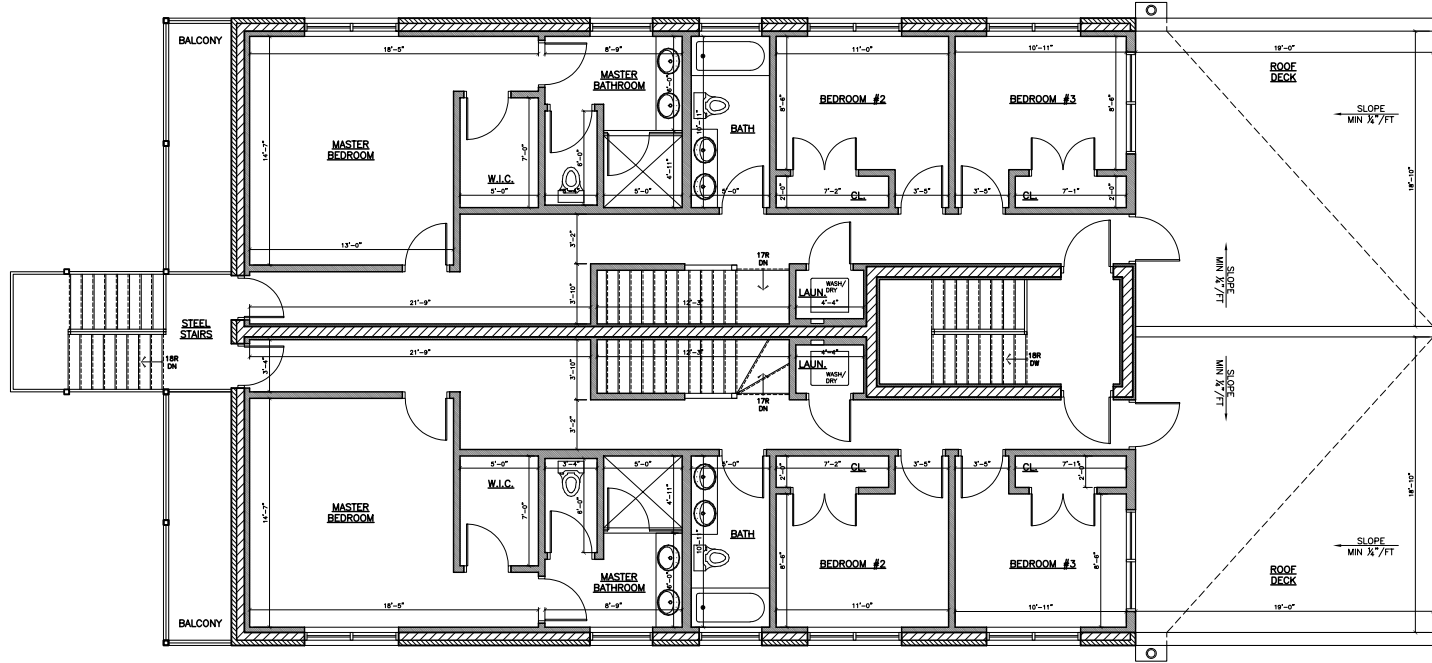
REVISIONS:	
DRAWN BY:	RY
PROPOSED SECOND FLOOR PLAN	
1533-35 W. FRY ST. CHICAGO, IL 60642	
PROJECT:	225 N. Green Ave. Chicago IL 60647
ARCHITECTURE	RECTS ARCHITECTS
PLANNING	773.772.2726 office 773.772.2844 fax
ARCHITECTURAL ENGINEERING	
PROJECT ADDRESS:	
DATE:	
NOT TO SCALE	
UNIT:	SI-IMPER
SHEET:	A1.2
	4 OF 10



Proposed Third Floor Plan

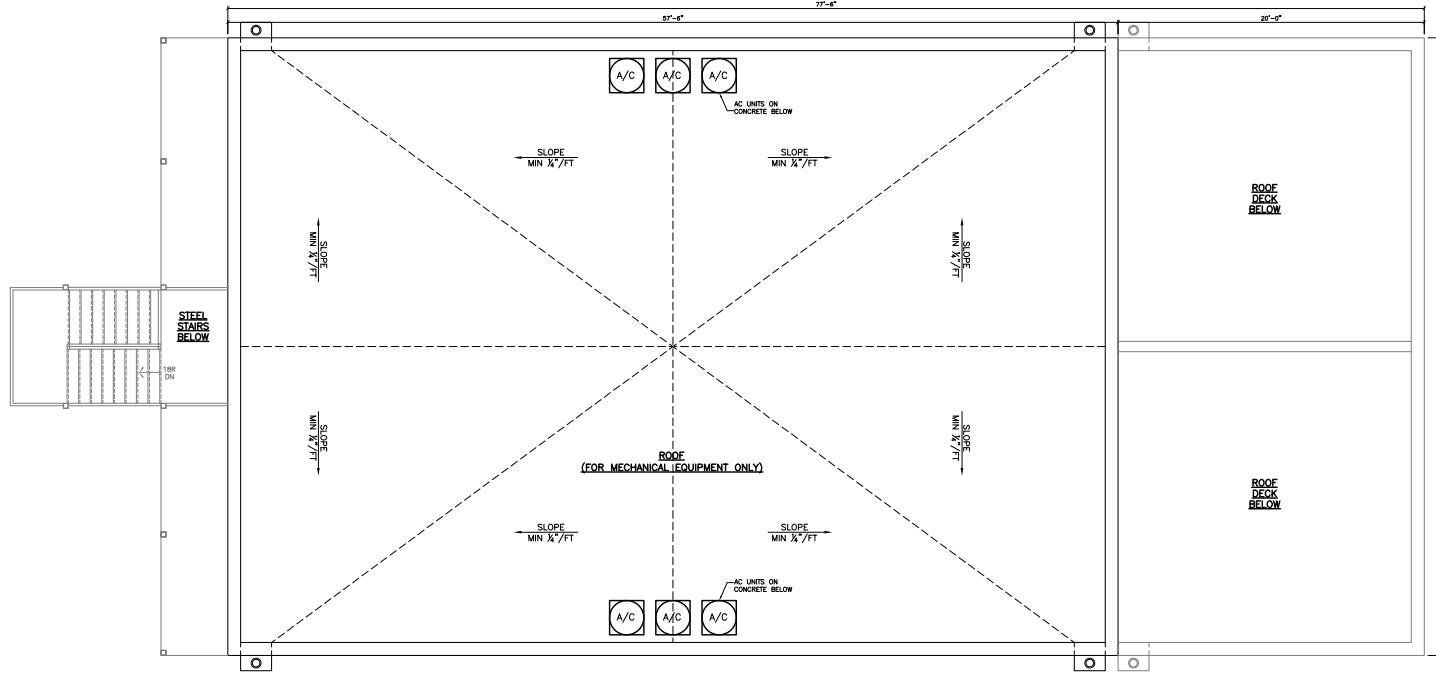
REVISIONS:	
DRAWN BY:	RV
PROPOSED THIRD FLOOR PLAN	
1533-35 W. FRY ST. CHICAGO, IL 60642	
PROJECT:	2123 N. Duane Ave. Chicago, IL 60642
ARCHITECTURE	RECTS ARCHITECTS
PLANNING	773.772.8546 ext. 400 773.772.8545 fax
ARCHITECTURAL ENGINEERING	
SHEET:	A1.3
PROJECT:	
DATE:	01-12-2020
SCALE:	NOT TO SCALE
DATE:	
DATE:	

Proposed Fourth Floor Plan



REVISIONS:	
DRAWN BY:	RV
PROPOSED FOURTH FLOOR PLAN	
1533-35 W. FRY ST. CHICAGO, IL 60642	
2103 N. STATE ST. CHICAGO, IL 60647	773.772.2756 office 773.772.2854 fax
ARCHITECTS	
ARCHITECTURE	PLANNING
ARCHITECTURAL ENGINEERING	
PROJECT:	1533-35 FRY ST.
SCALE:	NOT TO SCALE
DATE:	04-14-2009
SHEET:	A1.4
6 OF 10	

Proposed Roof Plan



REVISIONS:

DRAWN BY:
RV

PROPOSED ROOF PLAN

1533-35 W. FRY ST.
CHICAGO, IL 60642

212 N. Dearborn Ave.
Chicago, IL 60647
773.772.2756
773.772.2824 (fax)



ARCHITECTURE

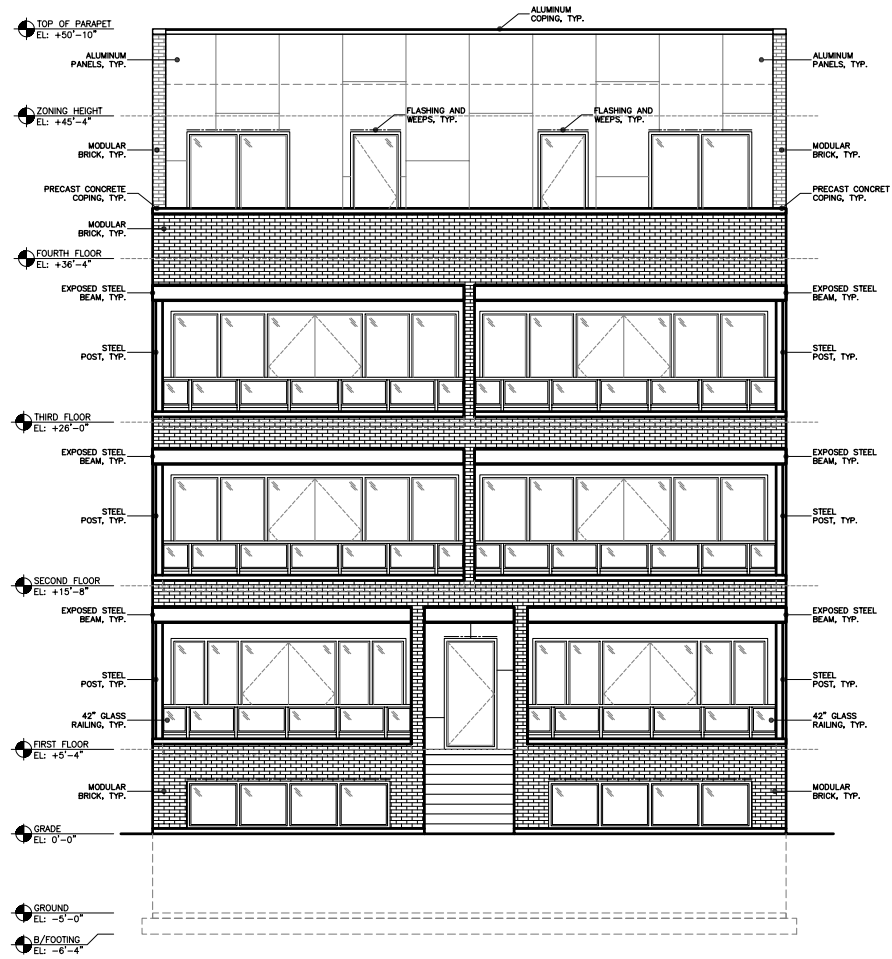
PLANNING
ARCHITECTURAL ENGINEERING

PROJECT:
1533-35 FRY ST.
SCALE:
NOT TO SCALE
DATE:
5-14-2009

SHEET:

A1.5

Front Elevation



REVISIONS:
DRAWN BY:
RV

FRONT ELEVATION

1533-35 W. FRY ST.
CHICAGO, IL 60642

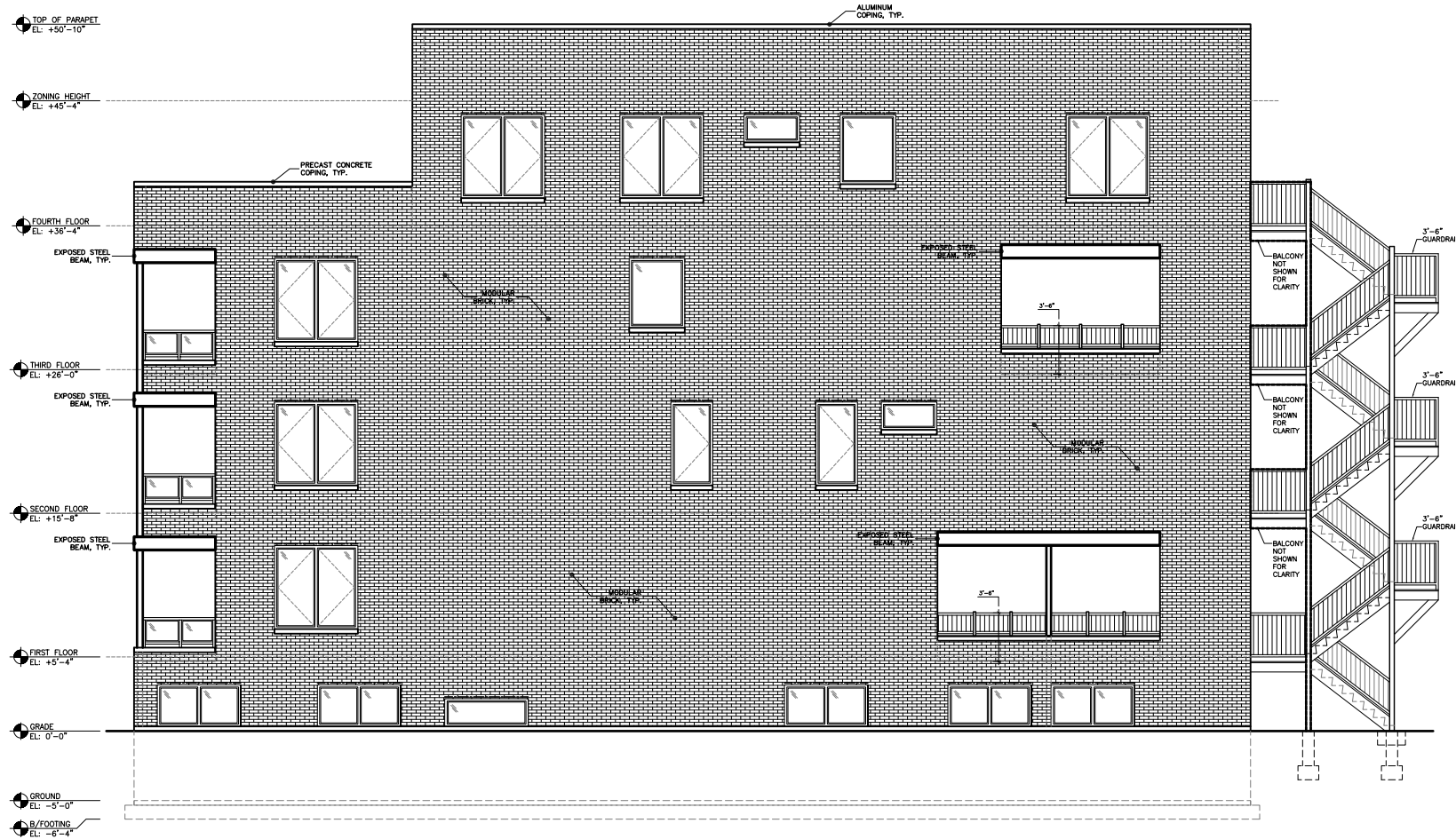
2103 N. SHAWAN AVE.
CHICAGO, IL 60647
773.772.2756 office
773.772.2854 fax

ARCHITECTURE
RECTS
ARCHITECT
PLANNING
ARCHITECTURAL ENGINEERING

PROJECT:
1533-35 FRY ST.
SCALE:
NOT TO SCALE
DATE:
04-16-2009

SHEET:

A2.0



Side Elevation- Looking East

REVISIONS:

DRAWN BY:
RV

SIDE ELEVATION

1533-35 W. FRY ST.
CHICAGO, IL 60642

733 S. LAUREL ST.
CHICAGO, IL 60647

773.772.2756 ext. 202
773.772.2854 fax

ARCHITECTS
PROJECTS

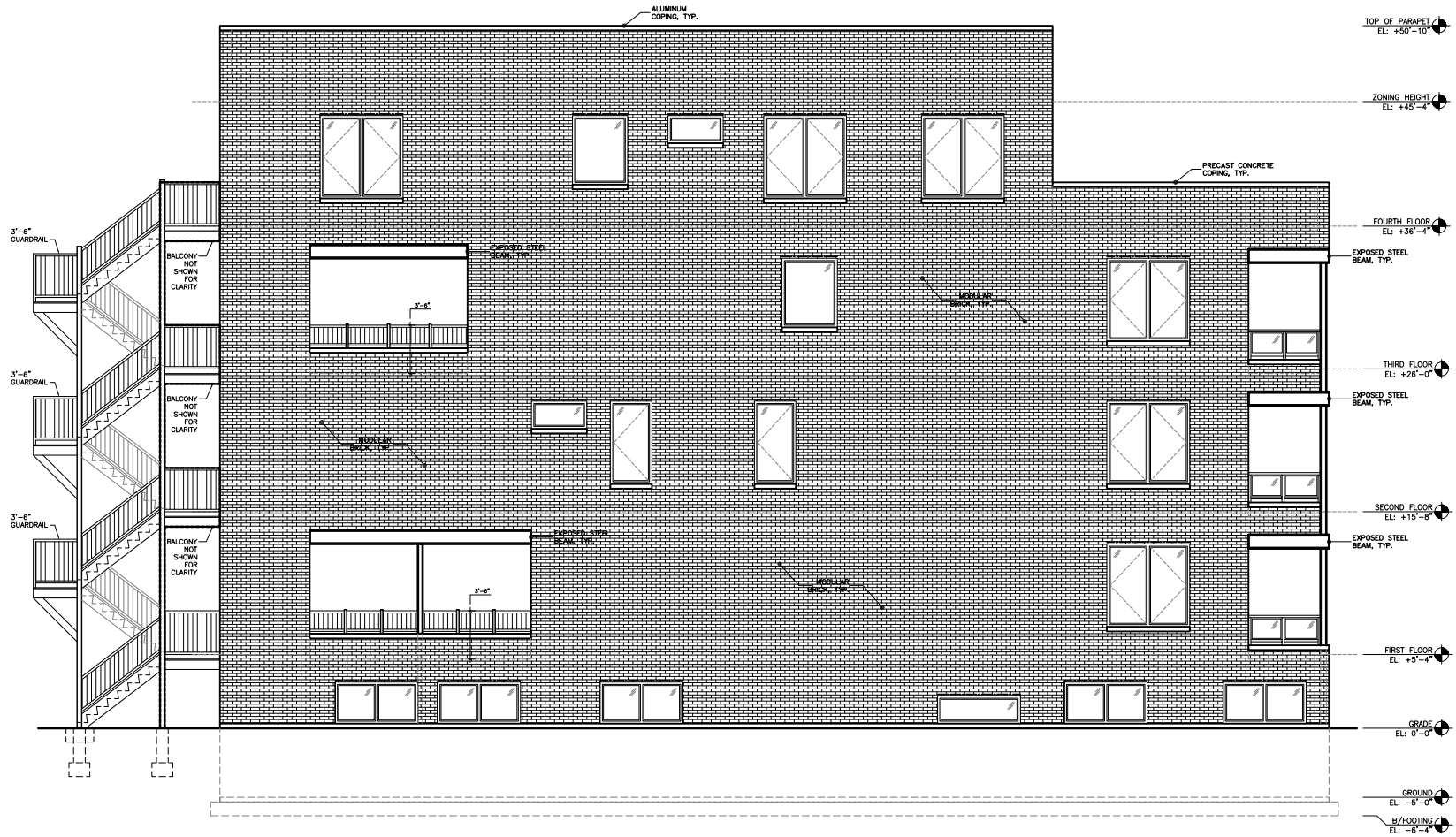
ARCHITECTURE
PLANNING
ARCHITECTURAL ENGINEERING

PROJECT:
1533-35 W. FRY ST.
SCALE:
NOT TO SCALE
DATE:
04-14-2009

SHEET:

A2.1

9 OF 10



Side Elevation- Looking West

REVISIONS:
 DRAWN BY:
 RY

SIDE ELEVATION

1533-35 W. FRY ST.
 CHICAGO, IL 60642

203 N. Dearborn Ave.
 Chicago, IL 60610
 773.772.2756 office
 773.772.2854 fax

ARCHITECTURE
ARCHITECTS
 PLANNING
 ARCHITECTURAL ENGINEERING

PROJECT:
 153335.FRY.EV.
 SCALE:
 NOT TO SCALE
 DATE:
 01-14-2020

SHEET:
A2.2





