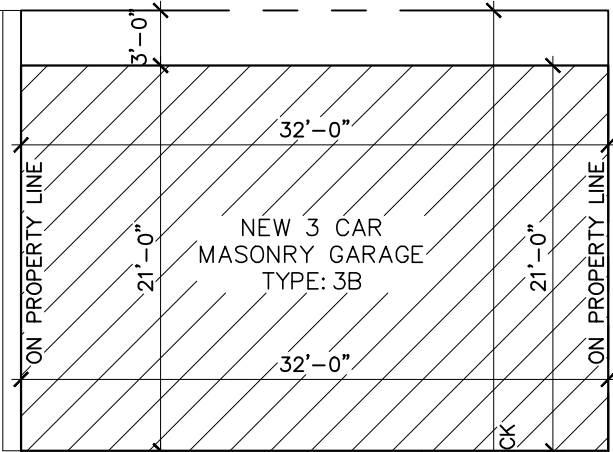


EXIST. 14' PUBLIC ALLEY

C
L

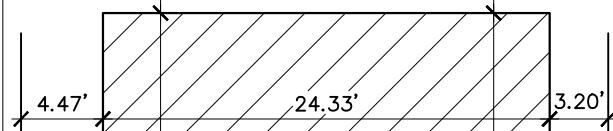
32.00'



NEW 3 CAR
MASONRY GARAGE
TYPE: 3B



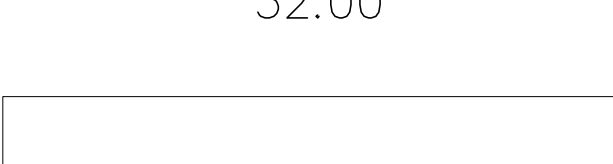
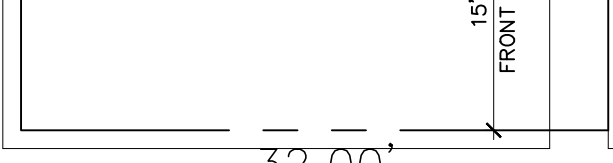
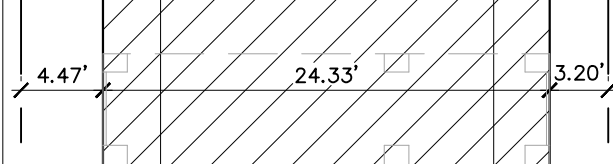
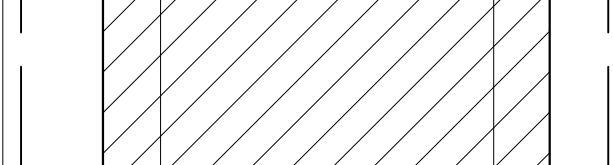
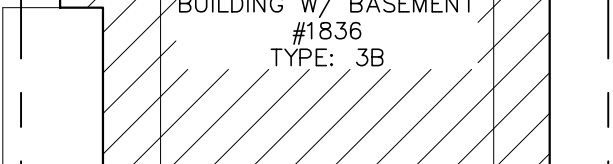
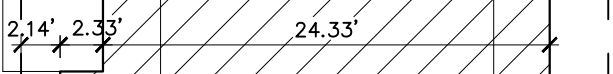
REAR YARD
OPEN SPACE:
398 SF



NEW 3 D.U.
3 STORY MASONRY
BUILDING W/ BASEMENT
#1836
TYPE: 3B

125.80'

125.80'



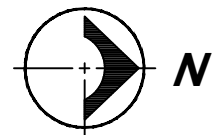
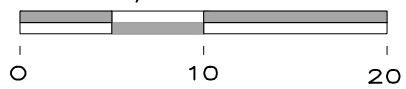
32.00'

W MOFFAT ST

N ALBANY AVE

SITE PLAN

SCALE: 3/32"=1'-0"



A-1

**PROPOSED 3 D.U.
3 STORY BUILDING**

**1836 N ALBANY AVE
CHICAGO ILLINOIS**